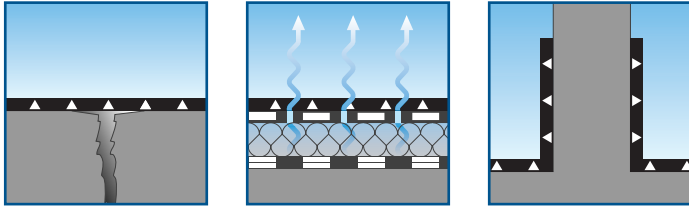


KEMPEROL®

Advantages at a glance:



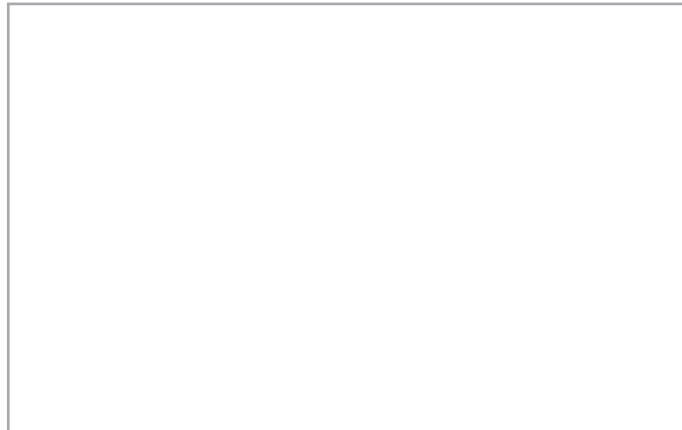
- tear resistant, bridges cracks up to 2 mm
- perfect adhesion between old and new membranes
- cold liquid applied (no torches or boiler required)
- monolithic, seamless membrane
- lightweight nature adds minimal load to roof
- rot to root resistant (KEMPEROL® 1K-PUR, 2K-PUR, V 210)
- water vapour permeable, allowing entrap-ped moisture to evaporate, hence existing membranes need not be removed
- quickly rain resistant
- permanently resilient over a temperature range of – 30°C to + 90°C
- UV resistant without any additional protection
- resistant to a wide range of chemicals (details on request)
- Shortterm heat resistant up to 250 °C (KEMPEROL® AC, 2K-PUR and BR), suited for use under mastic asphalt.
- protects all structural details without additional flashings or other mechanical fixings
- resistant to structural movement and normal foot traffic
- resistant to flying sparks and radiated heat

The KEMPER SYSTEM Customer service

- Technical consulting and site supervision up to project completion by experienced construction engineers and technicians.
- Damage evaluation and repair proposals
- Compilation of service schedules
- Technical training on site for KEMPER SYSTEM specialist contractors
- Product knowledge regularly refreshed through KEMPEROL® courses and training
- Detailed technical information available upon request

KEMPEROL® products may be applied only by specially trained applicators, the objective being to ensure that each and every application of KEMPEROL® achieves longterm durability and customer satisfaction.

Your KEMPER SYSTEM Partner:



KEMPER SYSTEM GmbH & Co.KG

Holländische Straße 32 – 36 • 34246 Vellmar, Germany
Tel. +49 (0)561 8295-0 • Fax +49 (0)561 8295-10
E-Mail: post@kemper-system.com
www.kemperol.com

Certified to DIN EN ISO 9001:2000 and DIN EN ISO 14001

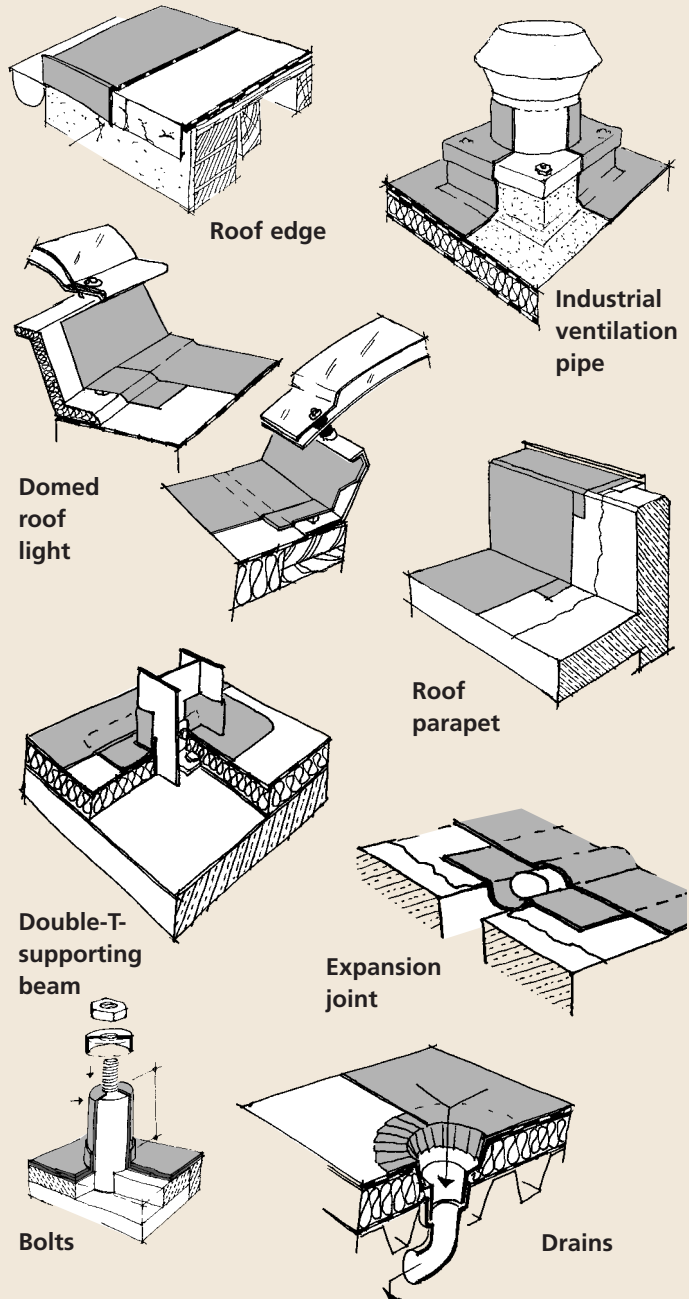
KEMPEROL® Professional water- proofing solutions



 **KEMPER**
SYSTEM



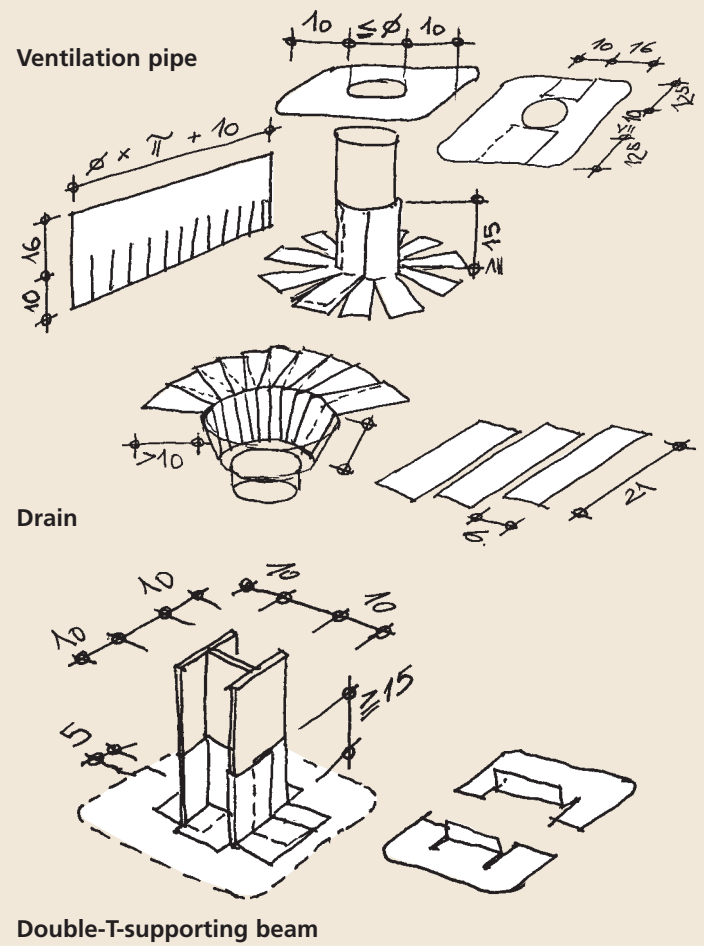
Problem solving with KEMPEROL®:



KEMPEROL® is reinforced with a fleece:

- To bridge cracks
- To improve tear resistance
- To achieve optimum tensile strength/elasticity combination
- To regulate film thickness

Some examples of fleece cuts for



Waterproofing with KEMPEROL® means:

- 40 years of experience and proven technology
- Life expectancy of 25 years according to ETAG 005
- Approved by FM Global and the British Board of Agrément
- International distribution network with experienced construction engineers and technicians
- References all over the world

The application of KEMPEROL®:



1. Prepare the substrate according to the priming recommendations.
2. Apply the first coat of KEMPEROL® to the (primed) substrate.



3. Embed the KEMPEROL® Fleece and work in with a nylon roller.
4. Apply the second coat of KEMPEROL® until the fleece is completely saturated and remove any bubbles.